

Emma loves to Run!

Emma!

A Mini BBR Tale!

The Adventures of

Stuart Nielsen



Emma runs everywhere...







uphills...





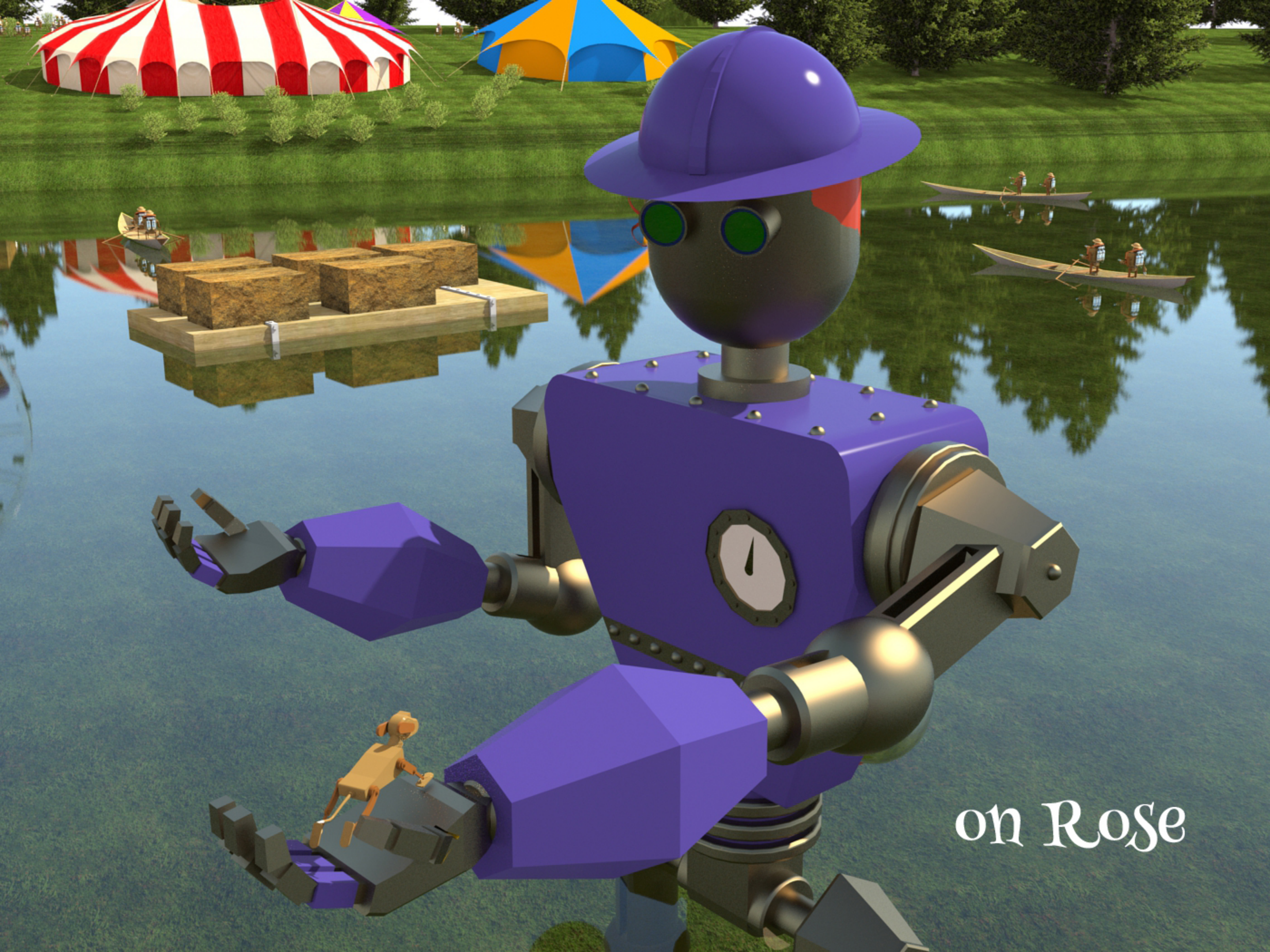
Downhills!





over bridges





on Rose



A 3D rendered scene showing a diver in a dark, deep underwater environment. The diver is positioned in the center, wearing a dark suit and a rectangular breathing apparatus. They are surrounded by dark, rippling water. In the foreground, two large, dark, cylindrical mechanical structures are visible, each with a complex base of curved, metallic-looking components. The lighting is dramatic, with bright highlights on the water's surface and the mechanical parts, creating a sense of depth and mystery. The overall atmosphere is dark and industrial.

underwater





*with friends*





on her house, but most of all



She loves  
running



with her  
forever family!





Now where is she going?