



Maggie, I have to check out a bridge. Strange things keep happening.

Kori inspects the Golden Bridge.



What was that!





Rock
Slide!



Trapped!

Kori are you okay!
How did you get here?



Stuart Nielsen
presents

The Curse

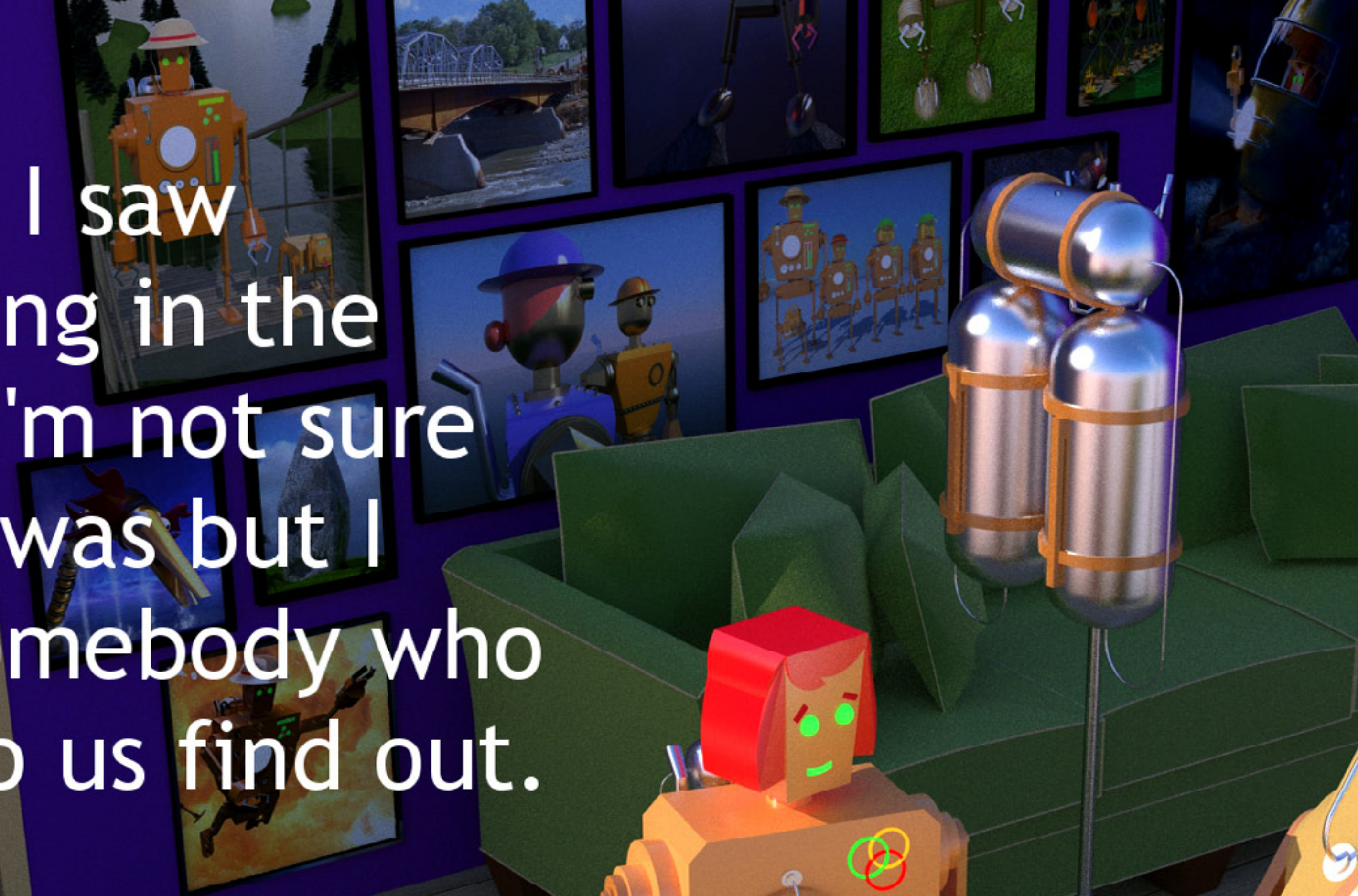
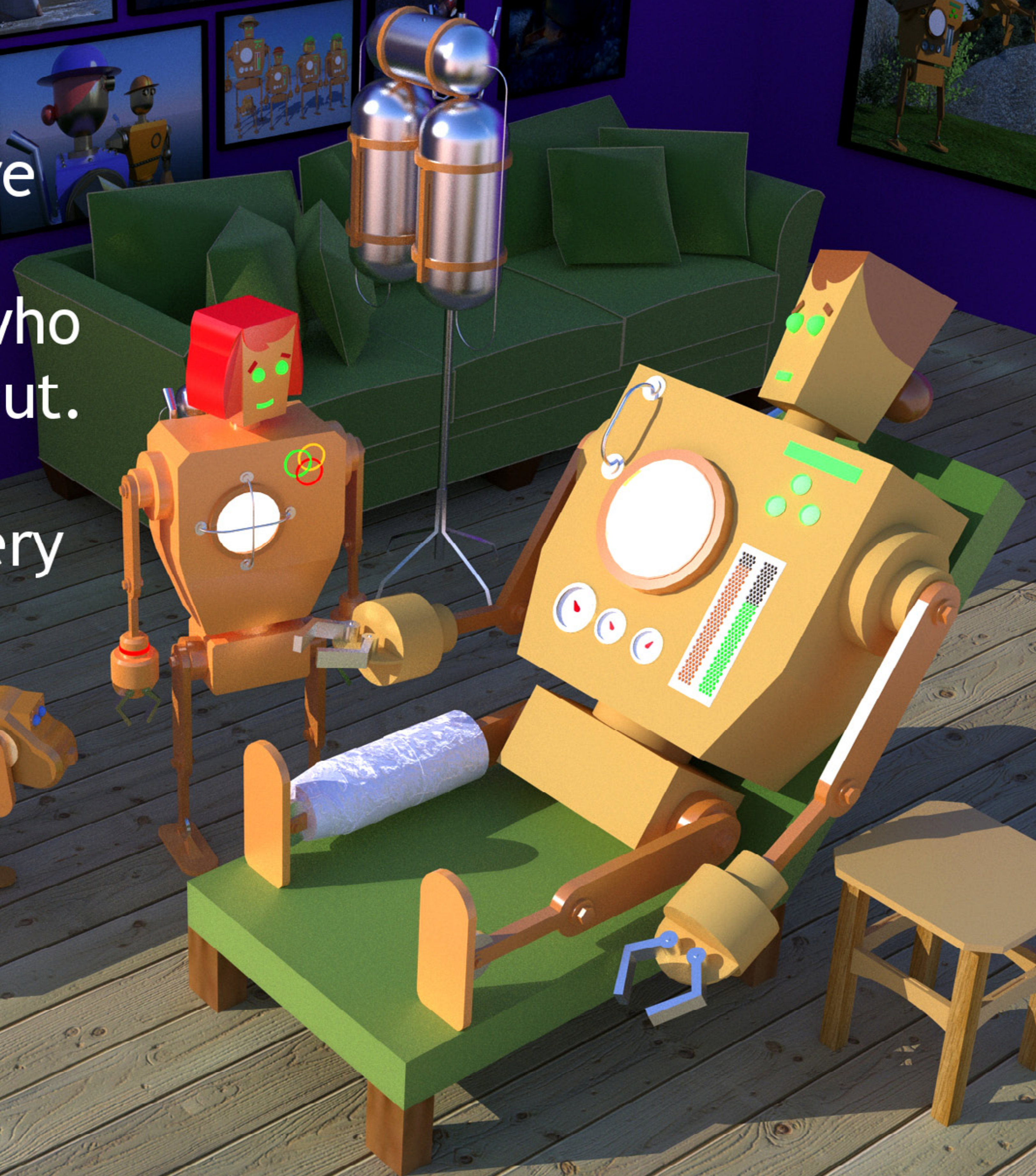
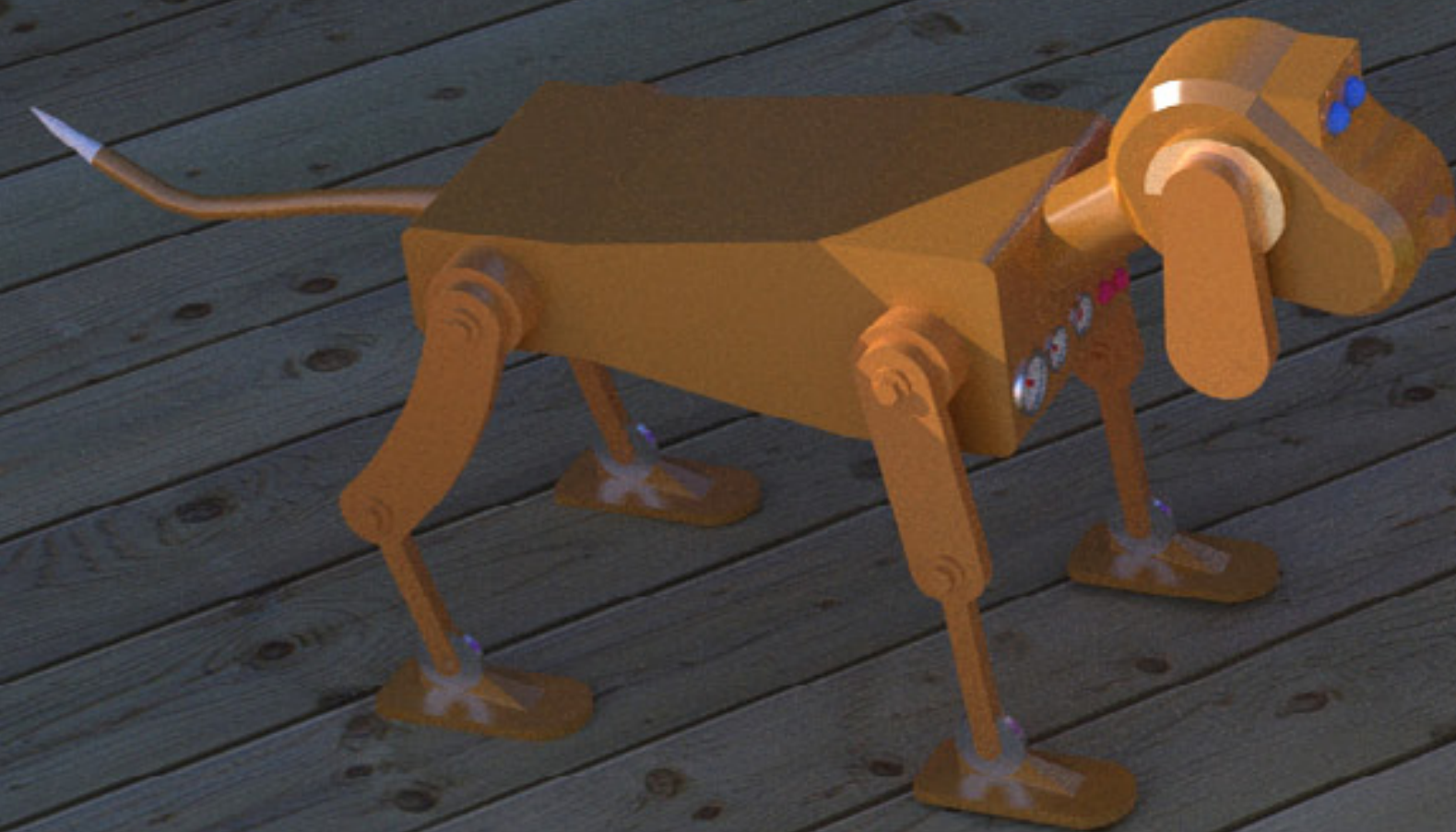
The Curse

Golden Brides

Filmed in 3D

Maggie, I saw something in the water. I'm not sure what it was but I know somebody who can help us find out.

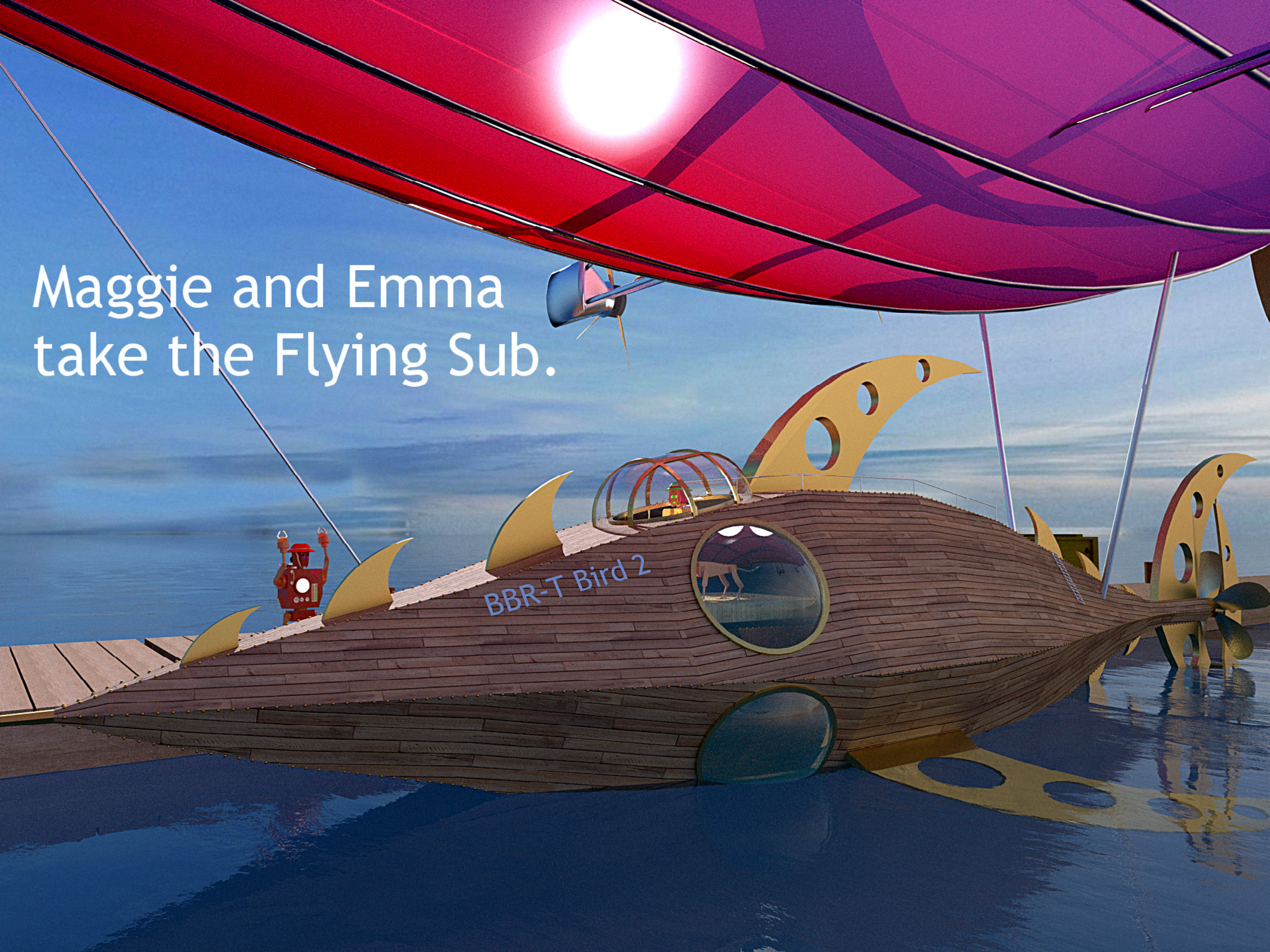
You have to be very careful.



A 3D-rendered scene from the game 'The Legend of Zelda: Breath of the Wild'. The scene is set in a wooden interior, possibly a room or a cave. A large, red, circular frame is superimposed over the scene, with a blue, glowing, curved shape (likely a portal or a piece of the environment) visible through it. The floor is made of wooden planks, and there are several wooden chairs and a table. A green hat is on the table. The walls are also made of wood, and there are small, glowing blue lights along the edges. The overall atmosphere is mysterious and ancient.

Kori said to
start at the
bottom of
the world.

Maggie and Emma
take the Flying Sub.





Up and away!

Someone is coming.



Dropping from
the balloon.



Splashdown!





Emma, I think
we go this way.

The abominable snowbots
prepare a welcome for
Maggie and Emma.



Run!



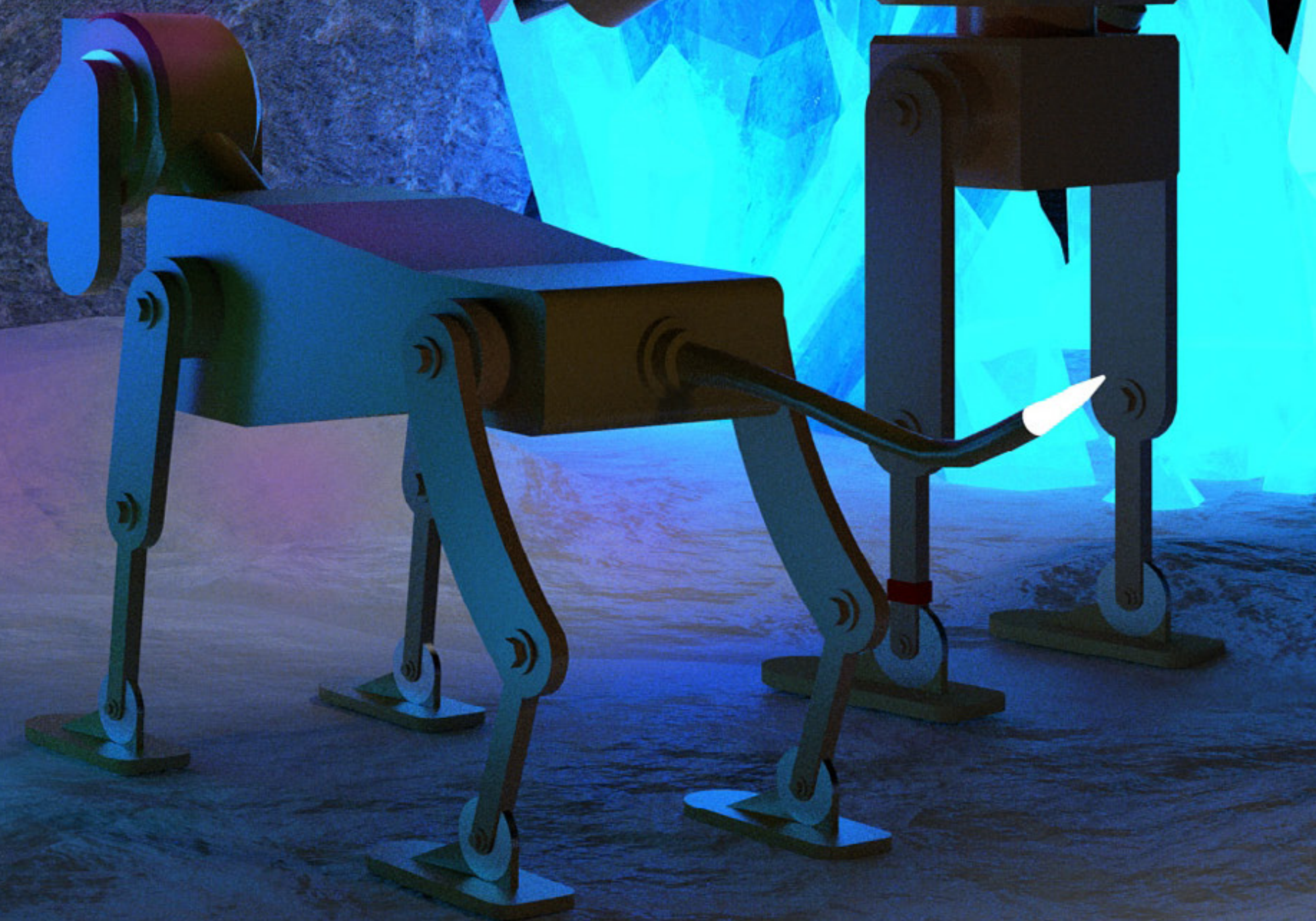
Go for
the cave!



ARCH

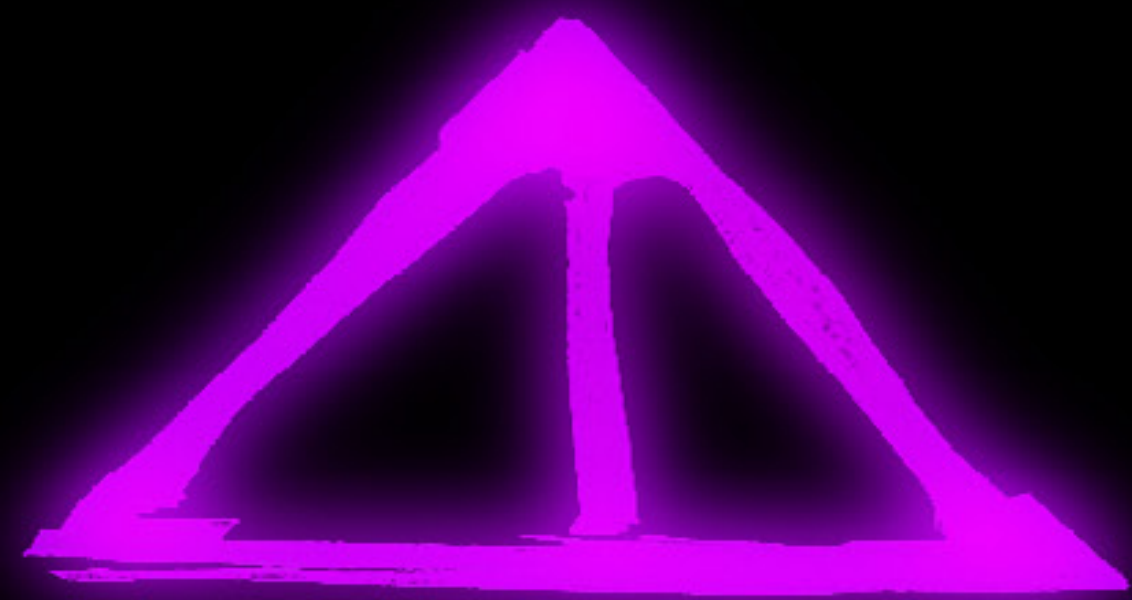


A riddle!



The riddle says "Arch" which can be a type of bridge.

ARCH



The image on the left looks like a truss bridge, because truss bridges use triangles.

The image on the right looks like an arch bridge.

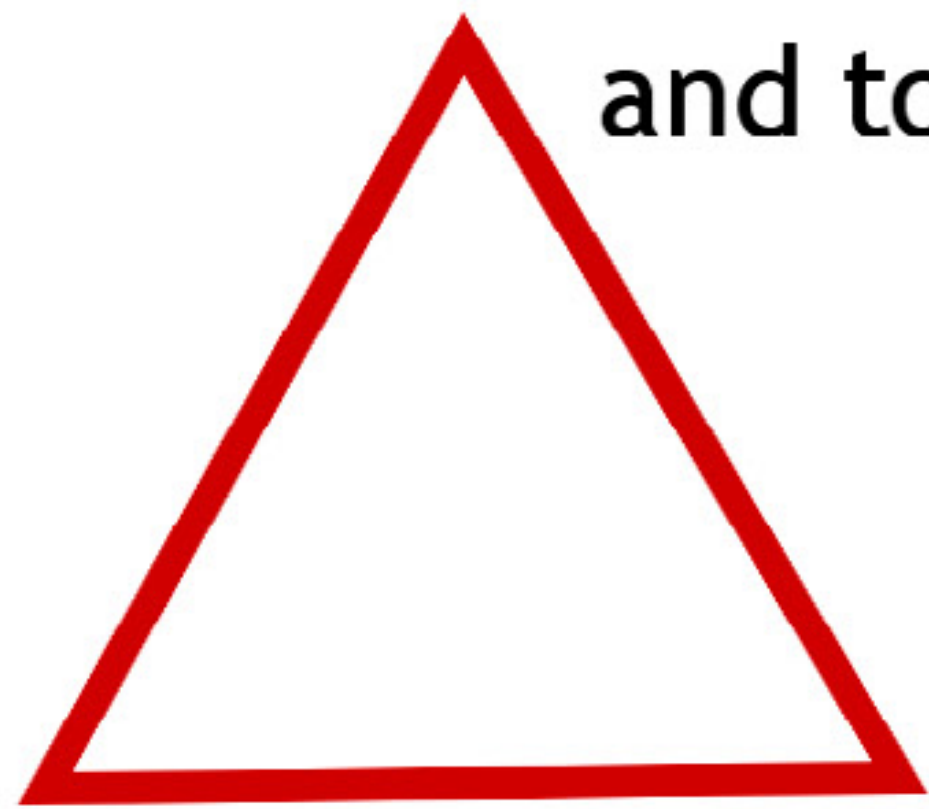


The warning tells us not to make the wrong choice!
Which way do we go?

Take a minute and build a truss bridge!

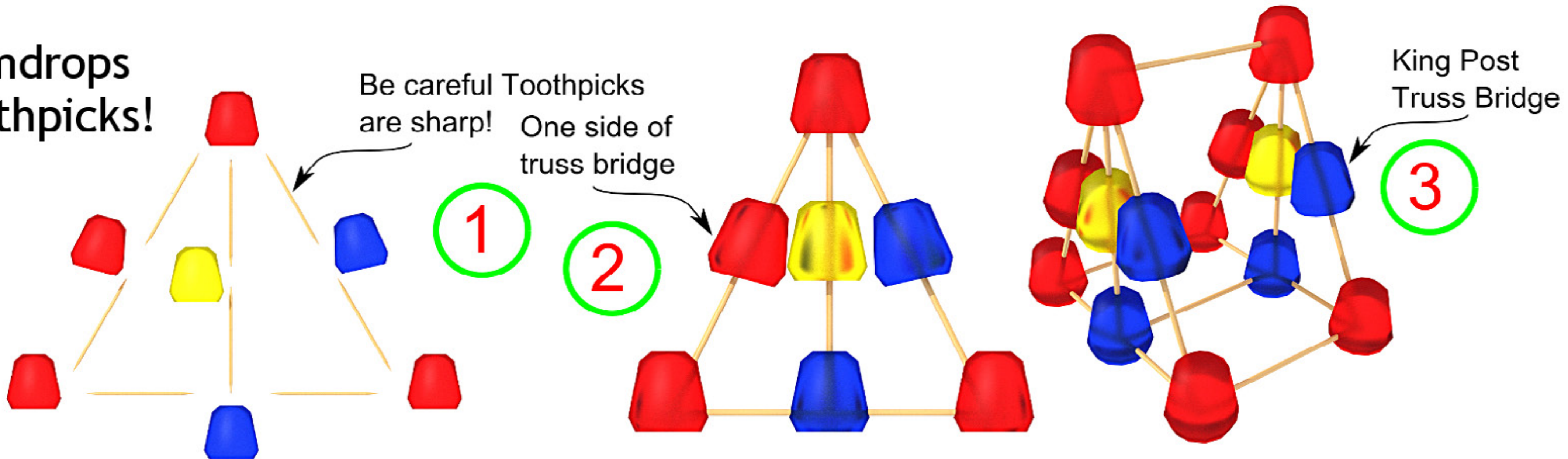
Be a Bridge Engineer!

Use Gumdrops and toothpicks!



Truss Bridges are made of triangles

Be careful Toothpicks are sharp! One side of truss bridge





Emma it looks like we picked the right cave and found the arch bridge.



Lava, I think this is
an active volcano.

Which steps do we take through the lava?



The stones show a truss, an arch and a suspension bridge.

I think we take the new bridge.

Take the suspension bridge!



Hang on Emma.
I have to jump!



Emma, I think we
will find our answer
behind that door.



Stay tuned for the next installment of

The Curse of the Golden Bridge!



Coming Soon!

As soon as I figure it out...



Dedicated to my wife Kori!

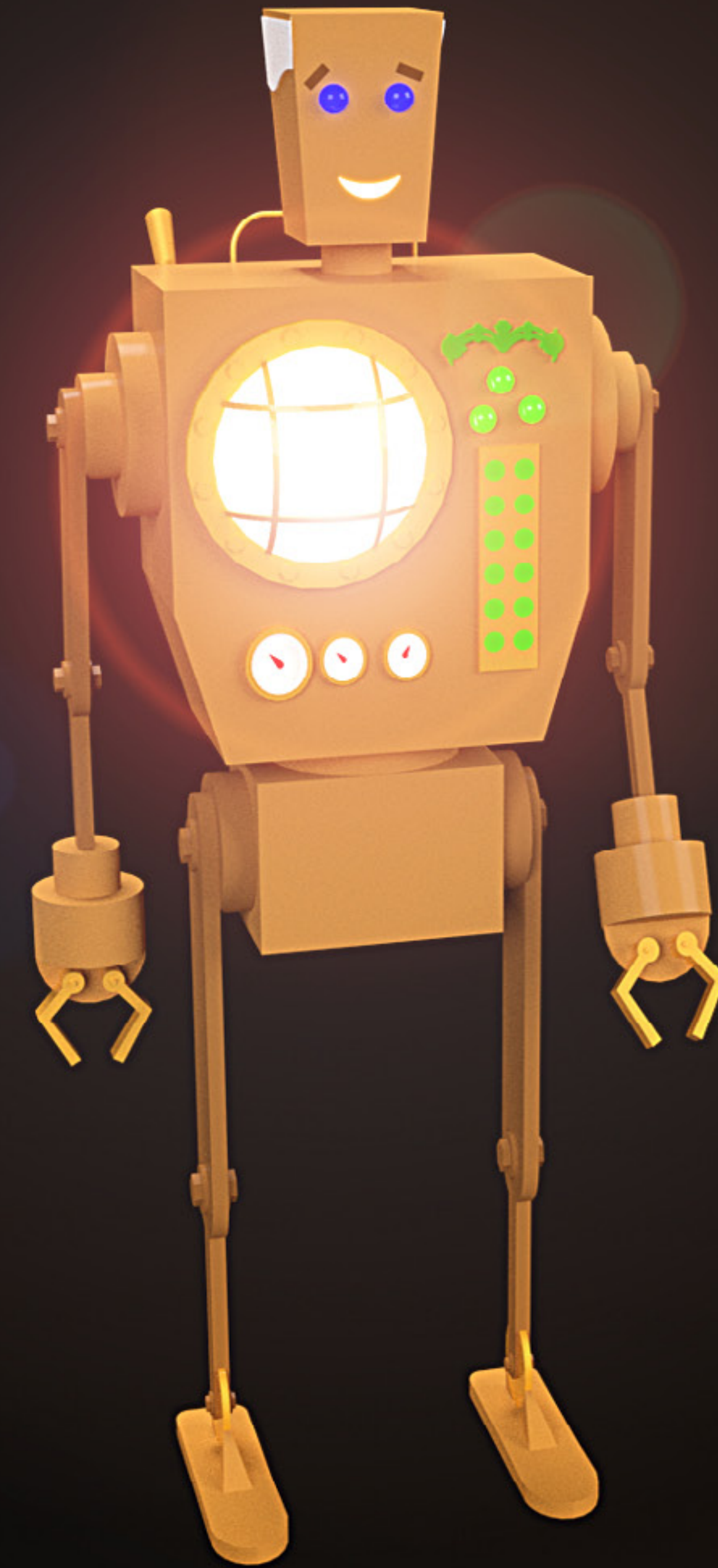
All the characters in this book are named after members of my family.

For more books about Bridge Building Robots, check out

www.bridgerobots.com

for free ebook downloads.

If you liked this book please leave a review on my Amazon book pages. You don't have to buy a copy to make a comment!



Stuart Nielsen is a professional engineer who enjoys making books in his spare time.